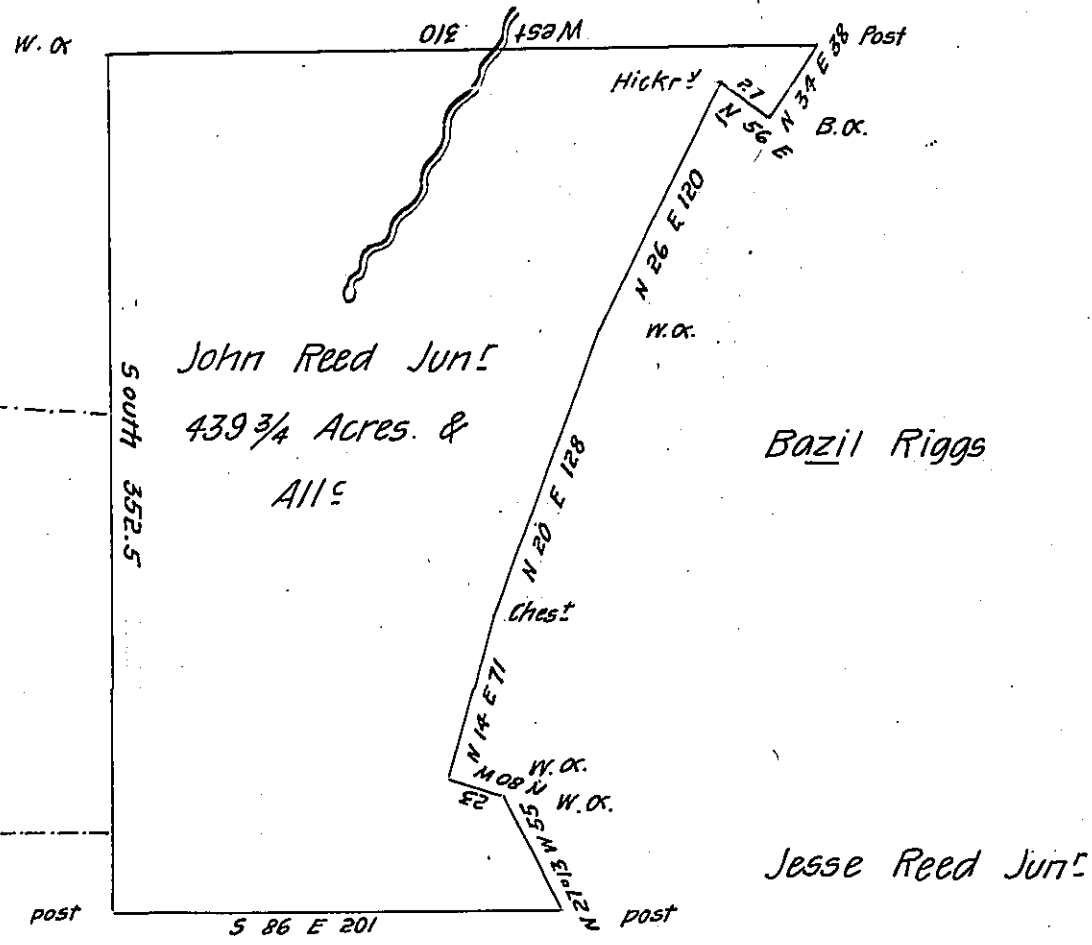


Surveyed Land

Wm Reed
Titus Reed
Timothy Reed



—Turners Improvement

Situated on the Waters of Sidelinghill-Creek Colerain Town-
 ship Bedford County ~~County~~ Containing 439 3/4 Acres with the usual Allow-
 ance of six P Cent for Roads &c^a Surveyed for John Reed J^r the 10th
 day of October 1794 on Warrant dated the 21st day of February 1794

George Woods Jun^r D. S.

To Daniel Brodhead Esq^r

S. G.

Examined by me December 16th 1808

To Samuel Cochran Esqr

John Anderson

Surveyor General

Deputy Surveyor

IN TESTIMONY that the above is a copy of the original remaining on file in
 the Department of Internal Affairs of Pennsylvania, made
 conformably to an Act of Assembly approved the 16th day of
 February, 1833, I have hereunto set my Hand and caused
 the Seal of said Department to be affixed at Harrisburg,
 this twenty third day of October 1906

Laack Brown
 Secretary of Internal Affairs.